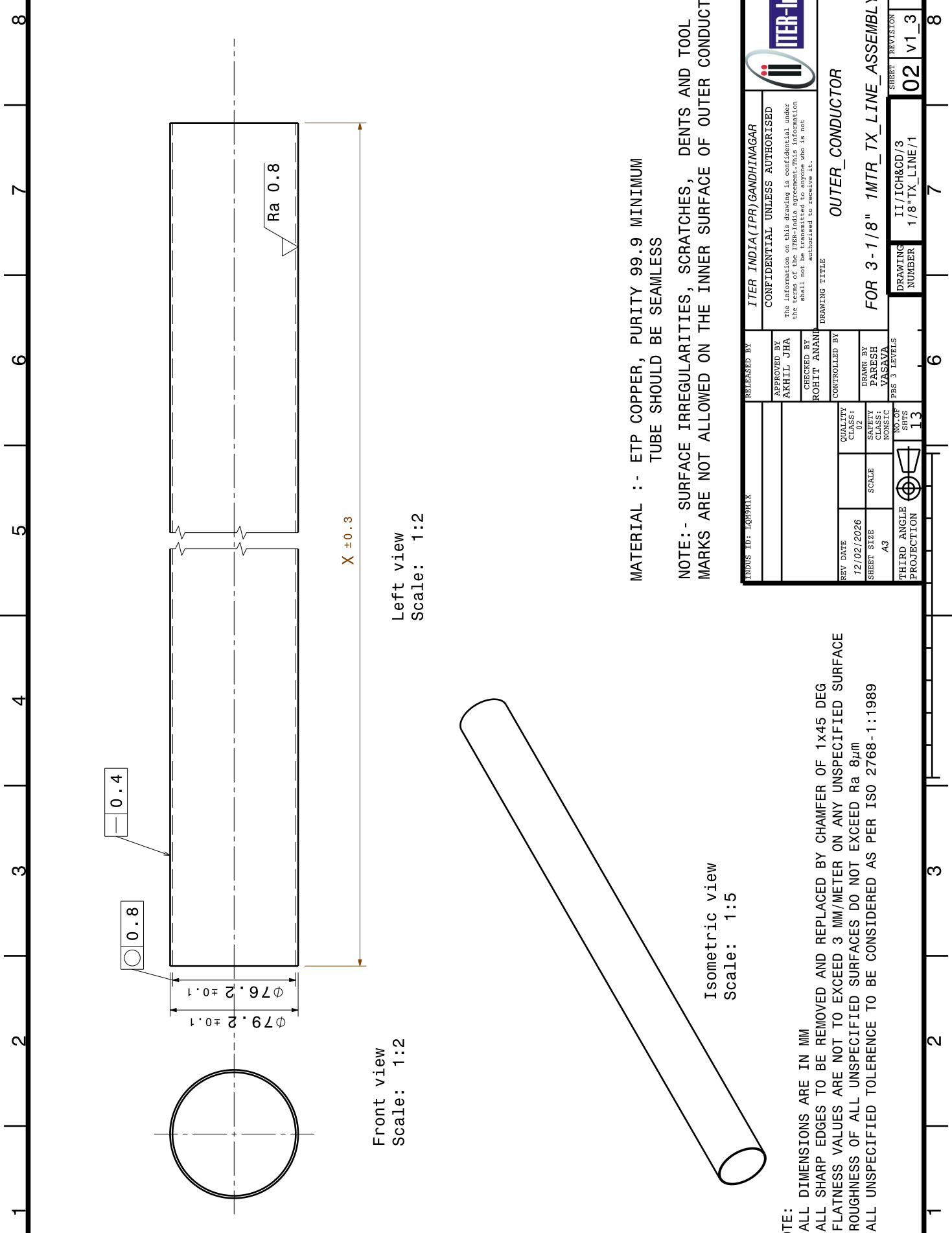


500MM	479MM	340MM	92.5MM
1000MM	979MM	840MM	92.5MM
TX-LINE LENGTH (L)	OUTER CONDUCTOR LENGTH (X)	INNER CONDUCTOR-1 LENGTH (Y)	INNER CONDUCTOR-2 LENGTH (Z)

10	M8X45 ALLEN BOLT WITH PLAIN, SPRING WASHER & NUT	SS304	HARDWARE	12
9	M6X55 ALLEN BOLT WITH PLAIN & SPRING WASHER	SS304	HARDWARE	02
8	FLANGE COVER 1&2	PVC	PARTS	1
7	3-1/8" IC JOINY ASSY	ASSY	ASSY	1
6	PTFE SUPPORT DISK & O-RING	PTFE + RUBBER SILICON	PART	1+1
5	BULLET 1&2	CuZn40	PARTS	1+1
4	INNER CONDUCTOR PART 1&2	ETP COPPER	PARTS	1+1
3	SWIVEL FLANGE PART 1&2	CuZn40	PARTS	1+1
2	FIX FLANGE	CuZn40	PART	1
1	OUTER_CONDUCTOR	ETP COPPER	PART	1
PART NO.	PART_NAME	MATERIAL	TYPE	QTY

- NOTE:
- 1.** MARKED CONSIDER AS AN IMPORTANT DIMENSIONS
 - 2.ALL DIMENSIONS ARE IN MM
 - 3.ALL SHARP EDGES TO BE REMOVED AND REPLACED BY CHAMFER OF 1x45 DEG
 - 4.FLATNESS VALUES ARE NOT TO EXCEED 3 MM/METER ON ANY UNSPECIFIED SURFACE
 - 5.ROUGHNESS OF ALL UNSPECIFIED SURFACES DO NOT EXCEED Ra 8µm
 - 6.ALL UNSPECIFIED TOLERANCE TO BE CONSIDERED AS PER ISO 2768-1

INDUS ID: L0991X		RELEASED BY ITER INDIA(IPR)GANDHINAGAR		ITER-India	
APPROVED BY AKHIL JHA		CONFIDENTIAL UNLESS AUTHORISED The information on this drawing is confidential under the terms of the ITER-India agreement. This information shall not be transmitted to anyone who is not authorized to receive it.			
CHECKED BY ROHIT ANAND		DRAWING TITLE 3-1/8" 1MTR TX LINE_ASSEMBLY			
CONTROLLED BY		SHEET REVISION 01 v1_3			
REV DATE 12/02/2026		QUALITY CLASS: A3		DRAWING NUMBER II/ICH&CD/3 1/8"TX_LINE/00	
SHEET SIZE A3		SCALE AS SHOWN		DRAWING REVISION 01 v1_3	
THIRD ANGLE PROJECTION		NO. OF SHEETS 13		SHEET REVISION 01 v1_3	

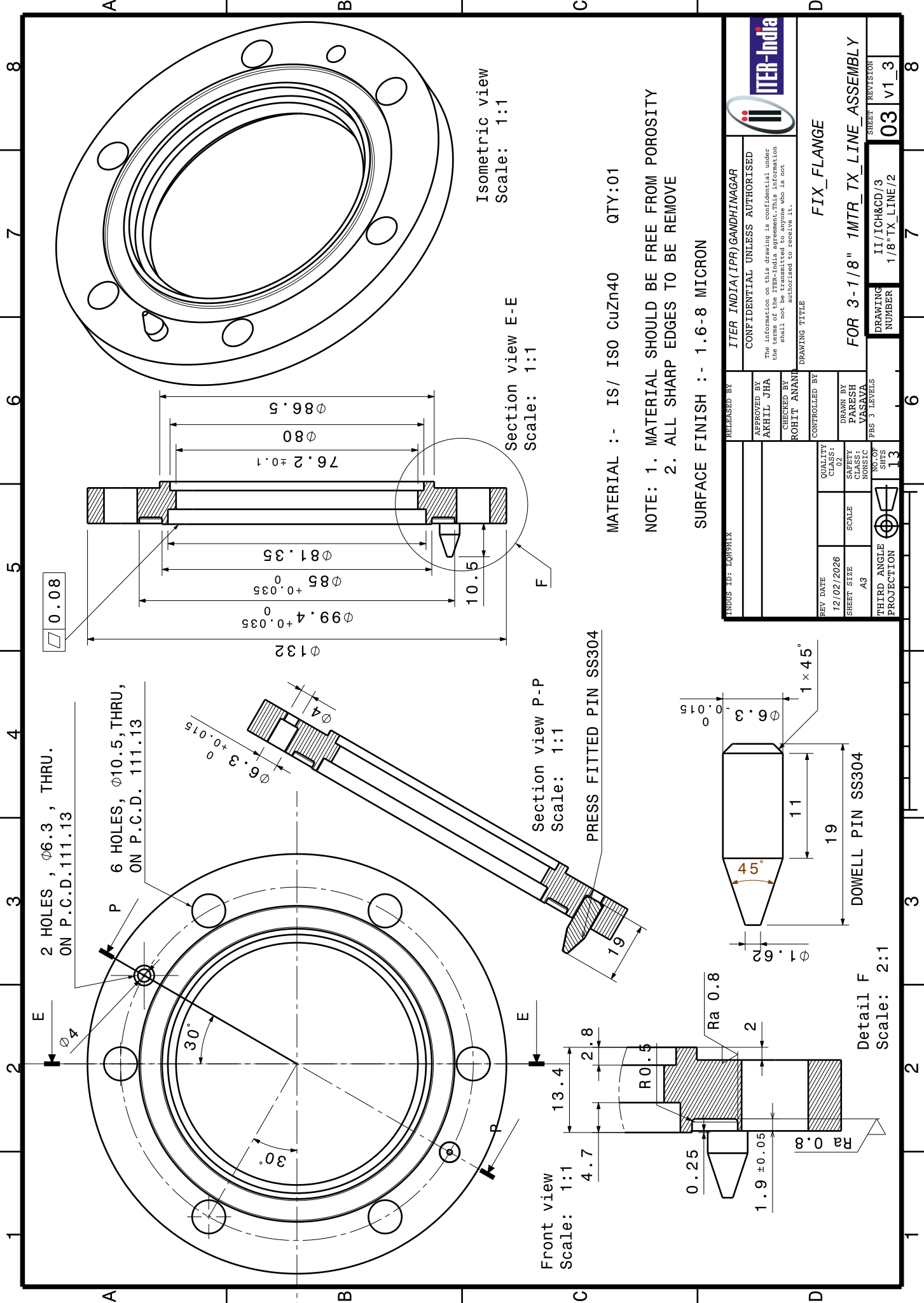


MATERIAL :- ETP COPPER, PURITY 99.9 MINIMUM
TUBE SHOULD BE SEAMLESS

NOTE:- SURFACE IRREGULARITIES, SCRATCHES, DENTS AND TOOL MARKS ARE NOT ALLOWED ON THE INNER SURFACE OF OUTER CONDUCTOR

INDUS ID: LQW9RLX		RELEASED BY ITER INDIA(IPR)GANDHINAGAR	
		CONFIDENTIAL UNLESS AUTHORISED	
		The information on this drawing is confidential under the terms of the ITER-India agreement. This information shall not be transmitted to anyone who is not authorised to receive it.	
		DRAWING TITLE	
		OUTER_CONDUCTOR	
		FOR 3-1/8" 1MTR_TX_LINE_ASSEMBLY	
		DRAFTING NUMBER	
		11/ICH&CD/3	
		1/8"TX_LINE/1	
		SHEET REVISION	
		02 v1_3	

- NOTE:
- 1.ALL DIMENSIONS ARE IN MM
 - 2.ALL SHARP EDGES TO BE REMOVED AND REPLACED BY CHAMFER OF 1x45 DEG
 - 3.FLATNESS VALUES ARE NOT TO EXCEED 3 MM/METER ON ANY UNSPECIFIED SURFACE
 - 4.ROUGHNESS OF ALL UNSPECIFIED SURFACES DO NOT EXCEED $Ra 8\mu m$
 - 5.ALL UNSPECIFIED TOLERANCE TO BE CONSIDERED AS PER ISO 2768-1:1989



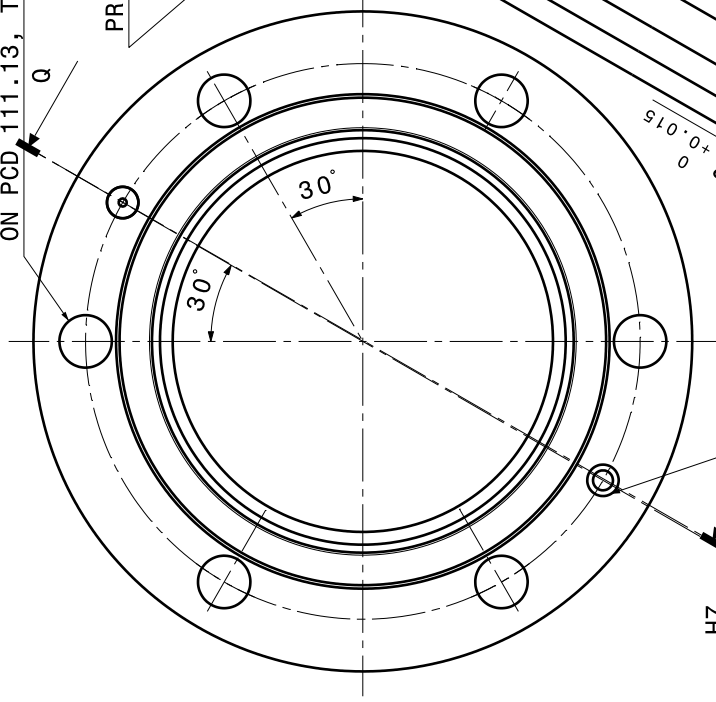
MATERIAL :- IS/ ISO CuZn40 QTY:01

NOTE: 1. MATERIAL SHOULD BE FREE FROM POROSITY
2. ALL SHARP EDGES TO BE REMOVE

SURFACE FINISH :- 1.6-8 MICRON

INDUS ID: L0991X		RELEASED BY ITER INDIA(IPR)GANDHINAGAR		ITER-India	
		APPROVED BY AKHIL JHA		CONFIDENTIAL UNLESS AUTHORISED	
		CHECKED BY ROHIT ANAND		The information on this drawing is confidential under the terms of the ITER-India agreement. This information shall not be transmitted to anyone who is not authorized to receive it.	
		CONTROLLED BY		DRAWING TITLE	
REV DATE 12/02/2026		QUALITY CLASS: Q1		FIX_FLANGE	
SHEET SIZE A3		SCALE AS SHOWN		FOR 3-1/8" 1MTR_TX_LINE_ASSEMBLY	
THIRD ANGLE PROJECTION		NO. OF SHTS 13		DRAWING NUMBER 11/ICH&CD/3	
				SHEET REVISION 03 v1_3	

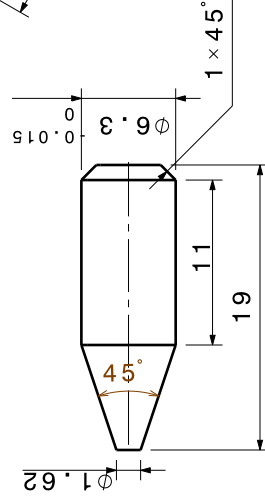
6 Nos., $\phi 10.5$, 30° EACH
ON PCD 111.13, THRU



Front view
Scale: 1:1

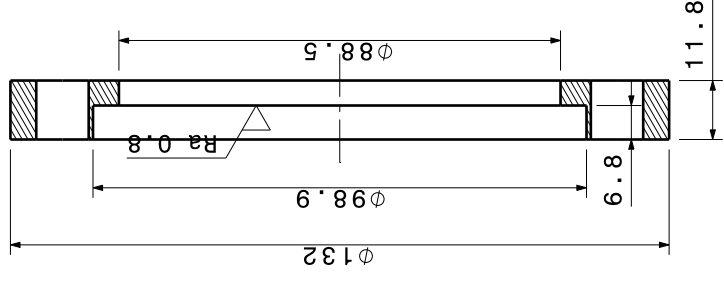
2 Nos., $\phi 6.3$,
ON PCD 111.13, THRU

Section view Q-Q
Scale: 1:1

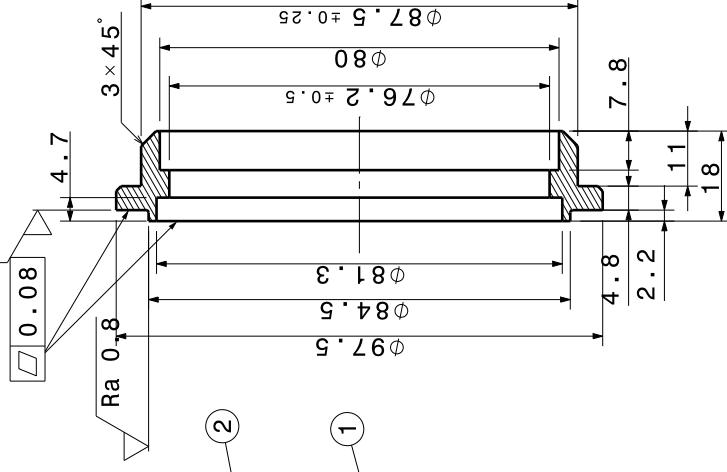


DOWEL PIN SS304

NOTE: 1. MATERIAL SHOULD BE FREE FROM POROSITY
2. ALL SHARP EDGES TO BE REMOVE



SWIVEL FLANGE PART-2
MATERIAL:- CuZn40
QTY: 01

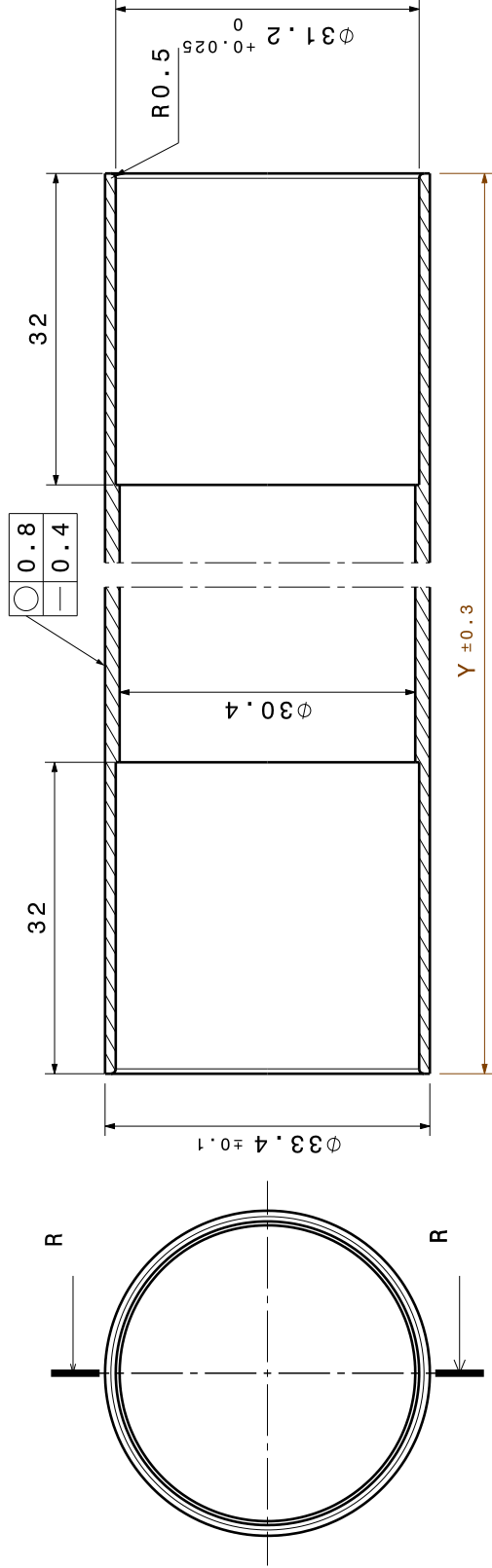


SWIVEL FLANGE PART-1
MATERIAL:- CuZn40
QTY: 01

MATERIAL:- CuZn40 QTY: 01
SURFACE FINISH : 1.6-8 MICRON

INDUS ID: LONGRIX		RELEASED BY	ITER INDIA(IPR)GANDHINAGAR	ITER-India	
		APPROVED BY	AKHIL JHA	CONFIDENTIAL UNLESS AUTHORISED	
		CHECKED BY	ROHIT ANAND	The information on this drawing is confidential under the terms of the ITER-India agreement. This information shall not be transmitted to anyone who is not authorized to receive it.	
		CONTROLLED BY		DRAWING TITLE	
REV DATE	12/02/2026	QUALITY CLASS:		SWIVEL FLANGE PART 1&2	
SHEET SIZE	A3	SCALE		FOR 3-1/8" 1MTR TX LINE ASSEMBLY	
THIRD ANGLE PROJECTION		SHEET CLASS:		DRAWING NUMBER	
		NON-SIC		11/ICH&CD/3	
		NO OF SHES	13	SHEET REVISION	
				04 V1_3	

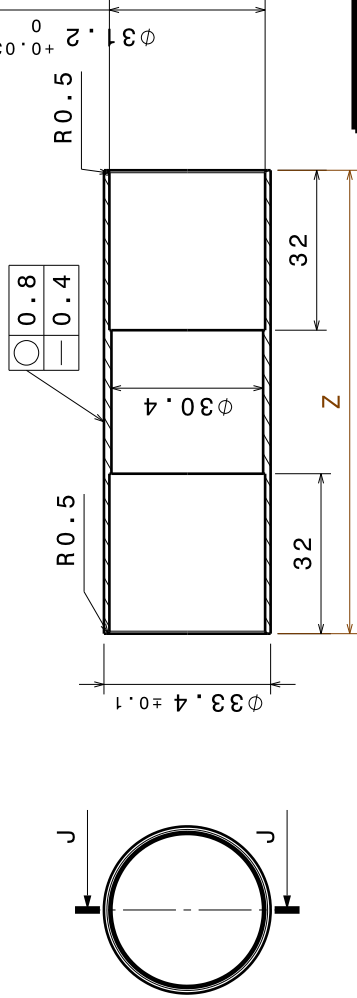
PART: INNER CONDUCTOR PART-1 MATERIAL :- ETP COPPER, QTY: 01



Front view
Scale: 2:1

Section view R-R
Scale: 2:1

PART: INNER CONDUCTOR PART-2 MATERIAL: ETP COPPER QTY:01



Front view
Scale: 1:1

Section view J-J
Scale: 1:1

MATERIAL: ETP COPPER PURITY 99.9% MINIMUM , TUBE SHOULD BE SEAMLESS

NOTE:- SURFACE IRREGULARITIES, SCRATCHES, DENTS AND TOOL MARKS ARE NOT ALLOWED ON THE OUTER SURFACE OF INNER CONDUCTOR

INDUOS ID: LON991X		RELEASED BY ITER INDIA(IPR)GANDHINAGAR		ITER-India	
		APPROVED BY AKHIL JHA		CONFIDENTIAL UNLESS AUTHORISED	
		CHECKED BY ROHIT ANAND		The information on this drawing is confidential under the terms of the ITER-India agreement. This information shall not be transmitted to anyone who is not authorized to receive it.	
		CONTROLLED BY		DRAWING TITLE	
REV DATE 12/02/2026		QUALITY CLASS: A3		INNER_CONDUCTOR PART-1 & PART-2	
SHEET SIZE A3		SCALE		FOR 3-1/8" 1MTR_TX_LINE_ASSEMBLY	
THIRD ANGLE PROJECTION		NO. OF SHTS 13		DRAWING NUMBER 11/ICH&CD/3 1/8"TX_LINE/3	
				SHEET REVISION 05 v1_3	

Technical drawing of a mechanical part, showing the front view and a section view (L-L).

Front view: A circular part with a central hole. The outer diameter is $\phi 33.4$ and the inner diameter is $\phi 22.5$. The central hole has a diameter of $\phi 6$. The part is labeled "Front view" and "Scale: 2:1".

Section view (L-L): A cross-section of the part. The outer diameter is $\phi 33.4$ and the inner diameter is $\phi 22.5$. The central hole has a diameter of $\phi 6$. The total length of the part is 25 ± 0.1 . The part is labeled "Section view L-L" and "Scale: 2:1".

Orthographic projection of a mechanical part, showing the front view and a section view (S-S).

Front view: A circular part with a central hole. The outer diameter is $\phi 22.5$. The inner hole has a diameter of $\phi 6.3$. The part has a thickness of $0.5 \times 45^\circ$. The drawing is labeled "Front view" and "Scale: 2:1".



Section view S-S: A cross-section of the part. The total width is 30.3 . The central hole has a diameter of $\phi 6.3$. The outer diameter is $\phi 22.5$. The part has a thickness of 10.3 . The section view is labeled "Section view S-S" and "Scale: 2:1".

Dimensions and features:

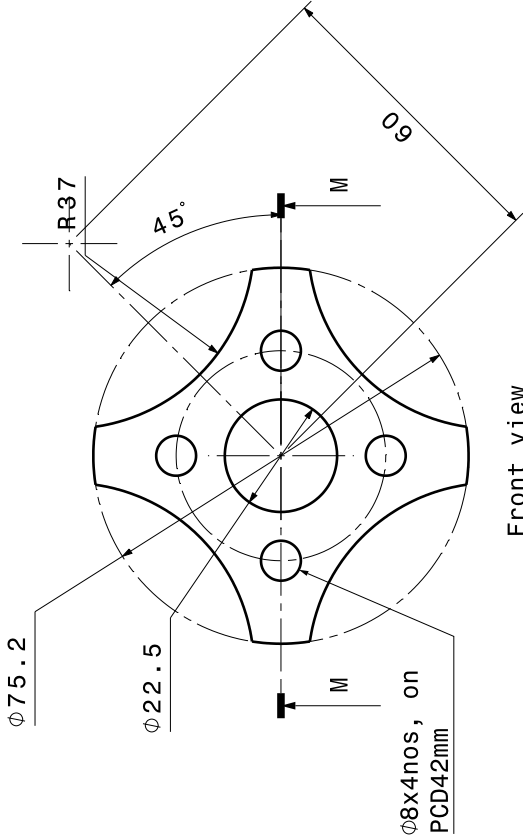
- Outer diameter: $\phi 22.5$
- Inner hole diameter: $\phi 6.3$
- Section view outer diameter: $\phi 33.4$
- Section view inner hole diameter: $\phi 31$
- Section view thickness: 10.3
- Section view total width: 30.3
- Section view outer radius: $R3$
- Section view outer chamfer: $1 \times 45^\circ$
- Section view inner chamfer: $0.5 \times 45^\circ$

- 1.REMOVE ALL DIRT, GREASE, AND OIL FROM THE COMPONENT.
- 2.MASK ALL THREADS, MATING SURFACES, AND ANY AREAS THAT MUST NOT BE SILVERED.
- 3.REMOVE OXIDATION OR SCALE FROM BRAZED AREAS.

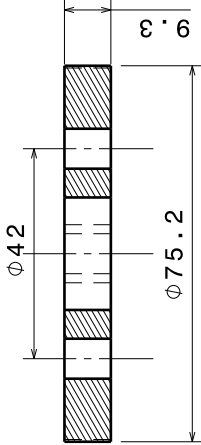


INDUS ID: LQ89M1X	RELEASED BY		I T E R _ I N D I A (I P R) G A N D H I N A G A R		 ITER-India
	APPROVED BY AKHIL JHA		CONFIDENTIAL UNLESS AUTHORISED		
	CHECKED BY ROHIT ANANI		The information on this drawing is confidential under the terms of the ITER-India agreement; this information shall not be transmitted to anyone who is not authorised to receive it.		
DRAWING TITLE					
REV DATE		QUALITY CLASS:	BULLET - 1&2		
12/02/2026					
SHEET SIZE	SCALE	SHEET CLASS	FOR 3-1/8" 1MTR_TX_LINE_ASSEMBLY		
A3		NON-ISO			
THIRD ANGLE PROJECTION		NO-OF SITS	DRAWING NUMBER 06		
		13	SHEET REVISION 06 v1_3		

PART: CENTRAL PTFE DISK QTY: 01



Front view
Scale: 1:1

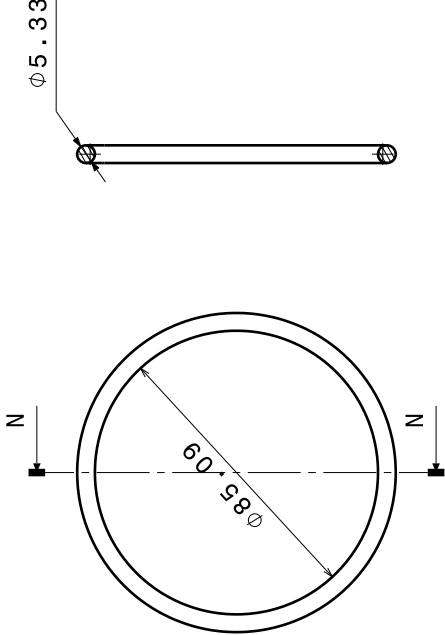


Section view M-M
Scale: 1:1




Isometric view
Scale: 2:3

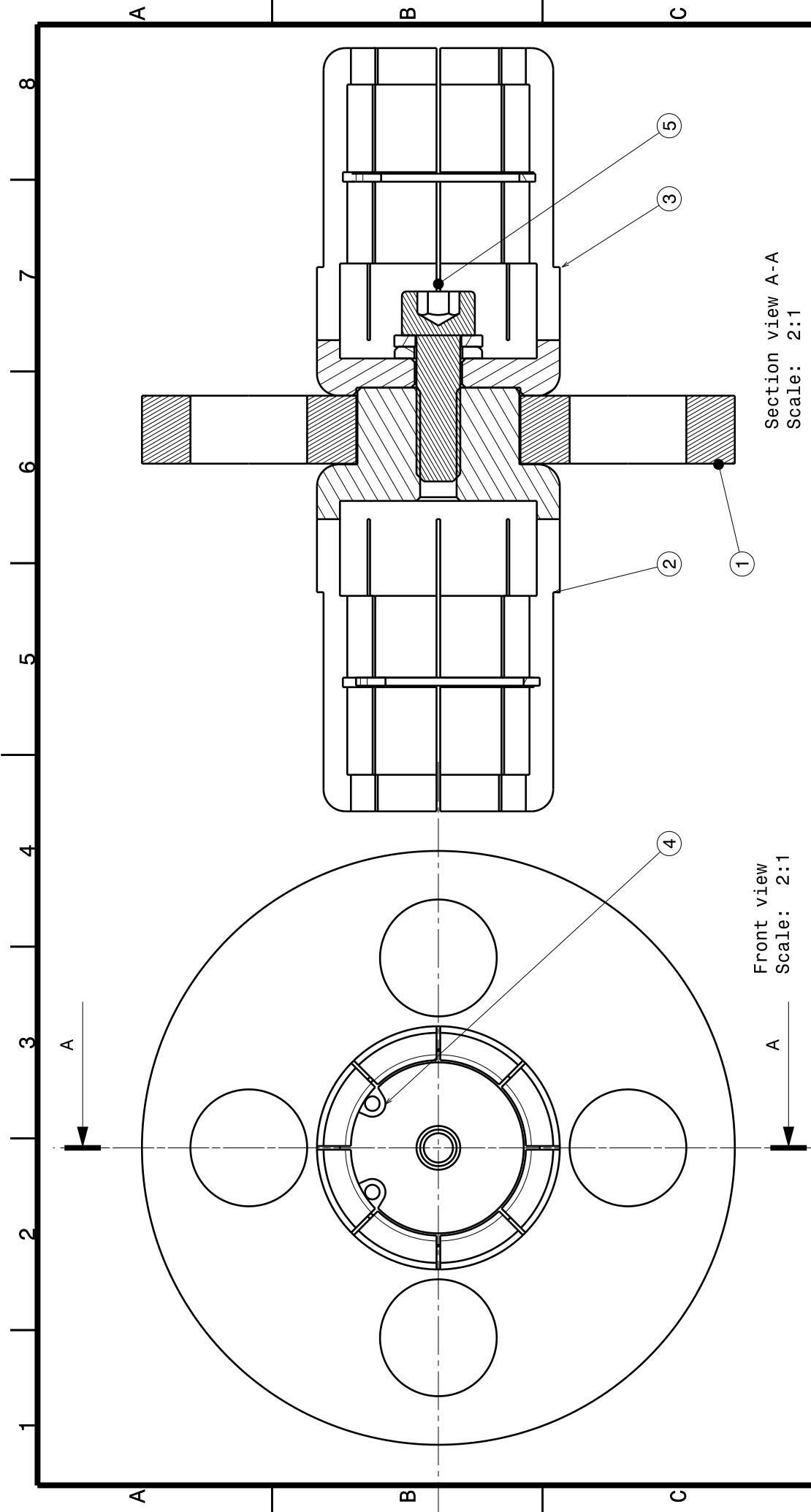
PART: O-RING MATERIAL: RUBBER SILICON QTY: 01



Front view[2]
Scale: 2:3

AS PER ISO 3601-1 METRIC STANDARD O-RING CROSS-SECTION: 5.33MM
AND INSIDE DIAMETER: 85.09MM

INDUS ID: LQW91X		RELEASED BY		ITER INDIA(IPR)GANDHINAGAR			
		APPROVED BY		CONFIDENTIAL UNLESS AUTHORISED			
		AKHIL JHA		The information on this drawing is confidential under the terms of the ITER India agreement. This information shall not be transmitted to anyone who is not authorised to receive it.			
		CHECKED BY					
		ROHIT ANAND					
		CONTROLLED BY		DRAWING TITLE			
				INNER CONDUCTOR SUPPORT DISK & O-RING			
				FOR 3-1/8" 1MTR_TX_LINE ASSEMBLY			
				DRAWN BY		SHEET REVISION	
				PARSH VASAVA		II/ICH&CD/3	
				PBS 3 LEVELS		1/8"TX_LINE/6	
						DRAWING NUMBER	
						07	
						v1_3	

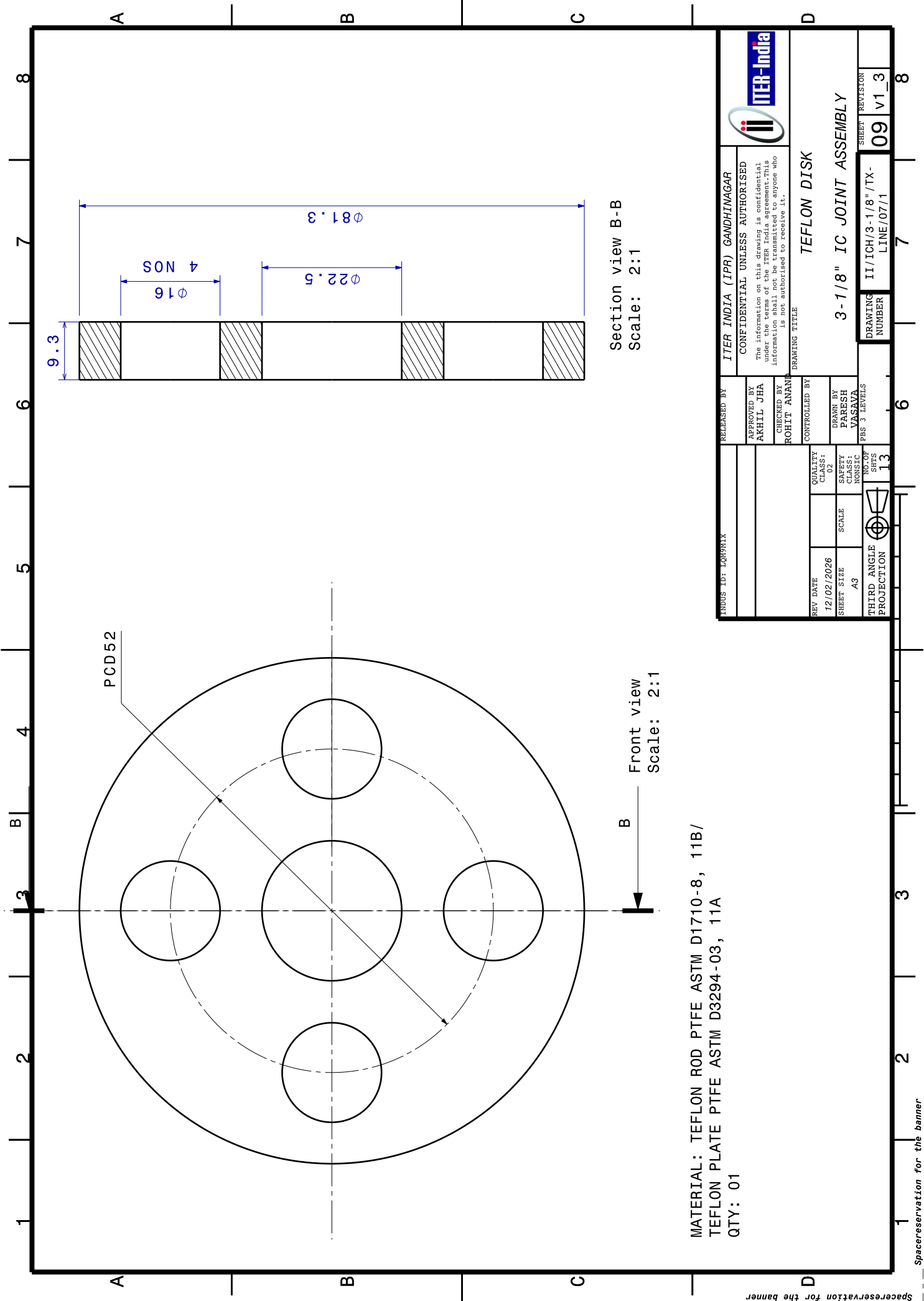


Front view
Scale: 2:1

Section view A-A
Scale: 2:1

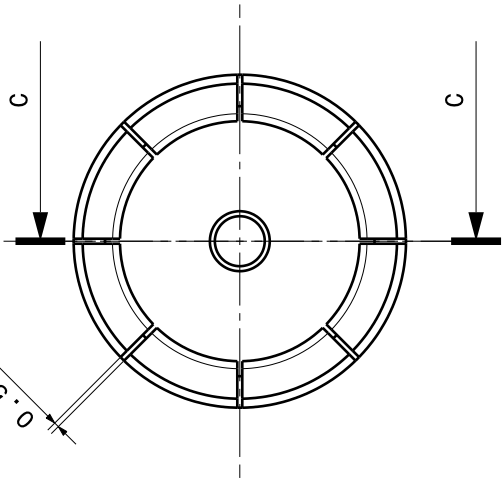
5	M6X25L CAP SCREW & WASHER	SS 304	2
4	CIRCLIP	SS 304	2
3	IC JOINT FEMALE	IS/ISO CuZn40	1
2	IC JOINT MALE	IS/ISO CuZn40	1
1	TEFLON DISK	TEFLON	1
PART NO	PART NAME	DESCRIPTION / MATERIAL	QTY

INDUS ID: LONGHIX		RELEASED BY ITER INDIA(IPR)GANDHINAGAR		CONFIDENTIAL UNLESS AUTHORISED	
		APPROVED BY AKHIL JHA		The information on this drawing is confidential under the terms of the ITER India agreement. This information shall not be transmitted to anyone who is not authorised to receive it.	
		CHECKED BY ROHIT ANAND		DRAWING TITLE IC JOINT ASSEMBLY	
REV DATE 12/02/2026		QUALITY CLASS: 02		FOR 3-1/8" 1MTR TX LINE ASSEMBLY	
SHEET SIZE A3		SCALE NONSIC		DRAWING NUMBER II/ICH/3-1/8"/TX-LINE/07/00	
THIRD ANGLE PROJECTION		NO OF SHTS 13		SHEET REVISION 08 v1_3	

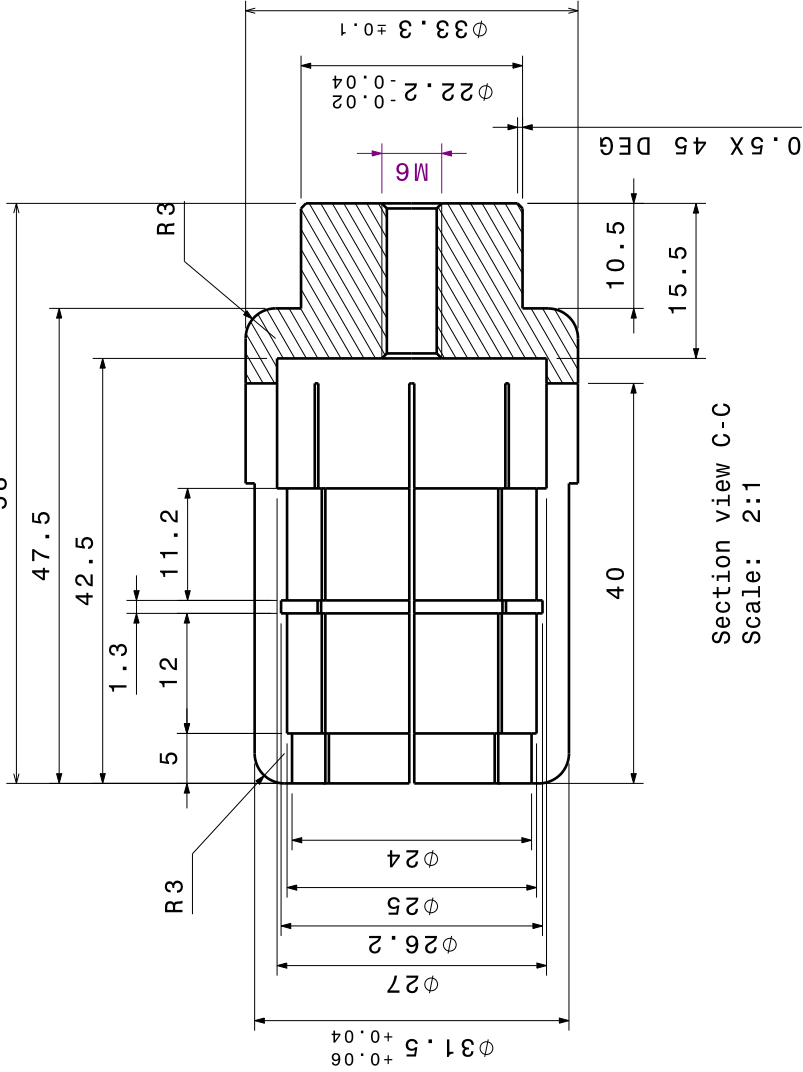


INDUS ID: LONGRLX		RELEASED BY ITER INDIA (IPR) GANDHINAGAR		ITER-India	
		APPROVED BY AKHIL JHA		CONFIDENTIAL UNLESS AUTHORISED The information on this drawing is confidential under the terms of the ITER India agreement. This information shall not be transmitted to anyone who is not authorised to receive it.	
		CHECKED BY ROHIT ANANT		DRAWING TITLE TEFLON DISK	
		CONTROLLED BY		3-1/8" IC JOINT ASSEMBLY	
REV DATE 12/02/2026		QUALITY CLASS: A3		DRAWN BY PARESH VASAVA	
SHEET SIZE A3		SCALE		PBS 3 LEVELS	
THIRD ANGLE PROJECTION		NO. OF SHTS 13		DRAWING NUMBER II/ICH/3-1/8"/TX-LINE/07/1	
				SHEET REVISION 09 v1_3	

0.5, 8 NOS SLOTS



Front view
Scale: 2:1



Section view C-C
Scale: 2:1

MATERIAL : IS/ISO CuZn40
QTY: 01

NOTE: FULL BODY SILVER PLATING (Cu:5 MICRON + Ag:20 MICRON)

NOTE:

- 1.ALL THREADS INSERT TO BE USED
- 2.ALL SHARP EDGES TO BE REMOVED AND REPLACED BY CHAMFER OF 1x45 DEG
- 3.FLATNESS VALUES ARE NOT TO EXCEED 3 MM/METER ON ANY UNSPECIFIED SURFACE
- 4.ROUGHNESS OF ALL UNSPECIFIED SURFACES DO NOT EXCEED Ra 8µm
- 5.ALL UNSPECIFIED TOLERANCE TO BE CONSIDERED AS PER ISO 2768-1:1989

INDUS ID: LQW9RLX		RELEASED BY ITER INDIA (IPR) GANDHINAGAR	
		CONFIDENTIAL UNLESS AUTHORISED The information on this drawing is confidential under the terms of the ITER India agreement. This information shall not be transmitted to anyone who is not authorised to receive it.	
		ITER-India	

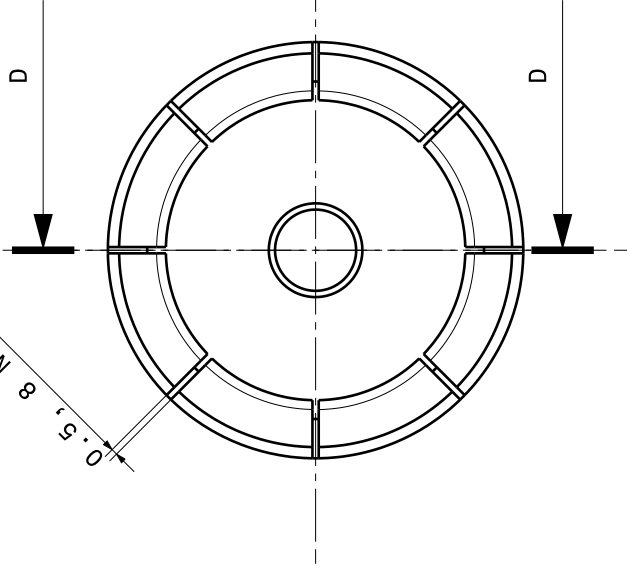
REV DATE 12/02/2026	QUALITY CLASS: CLASS 1	DRAWN BY PARESH VASAVA	
SHEET SIZE A3	SCALE AS SHOWN	CHECKED BY ROHIT ANAND	
THIRD ANGLE PROJECTION	NO. OF SHTS 13	CONTROLLED BY PBS 3 LEVELS	
		DRAWING NUMBER II/ICH/3-1/8"/TX-10	
		SHEET REVISION 10 v1_3	

IC JOINT MALE

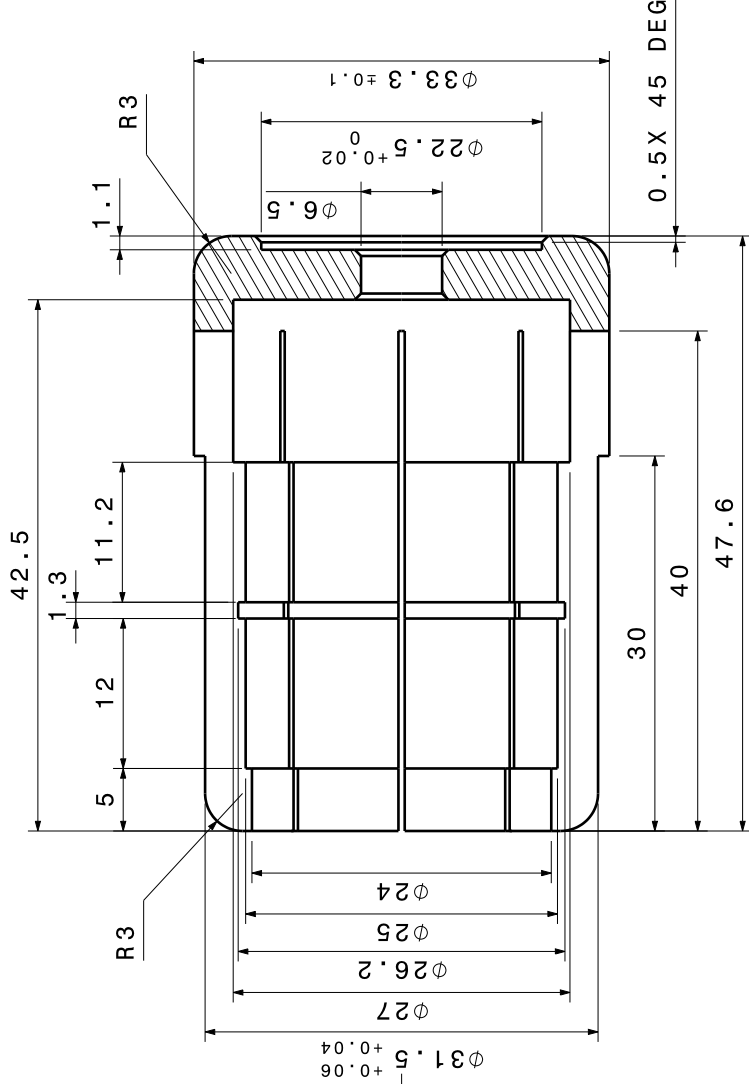
3-1/8" IC JOINT ASSEMBLY

II/ICH/3-1/8"/TX-10
LINE/07/2

0.5, 8 NOS SLOTS



Front view
Scale: 5:2



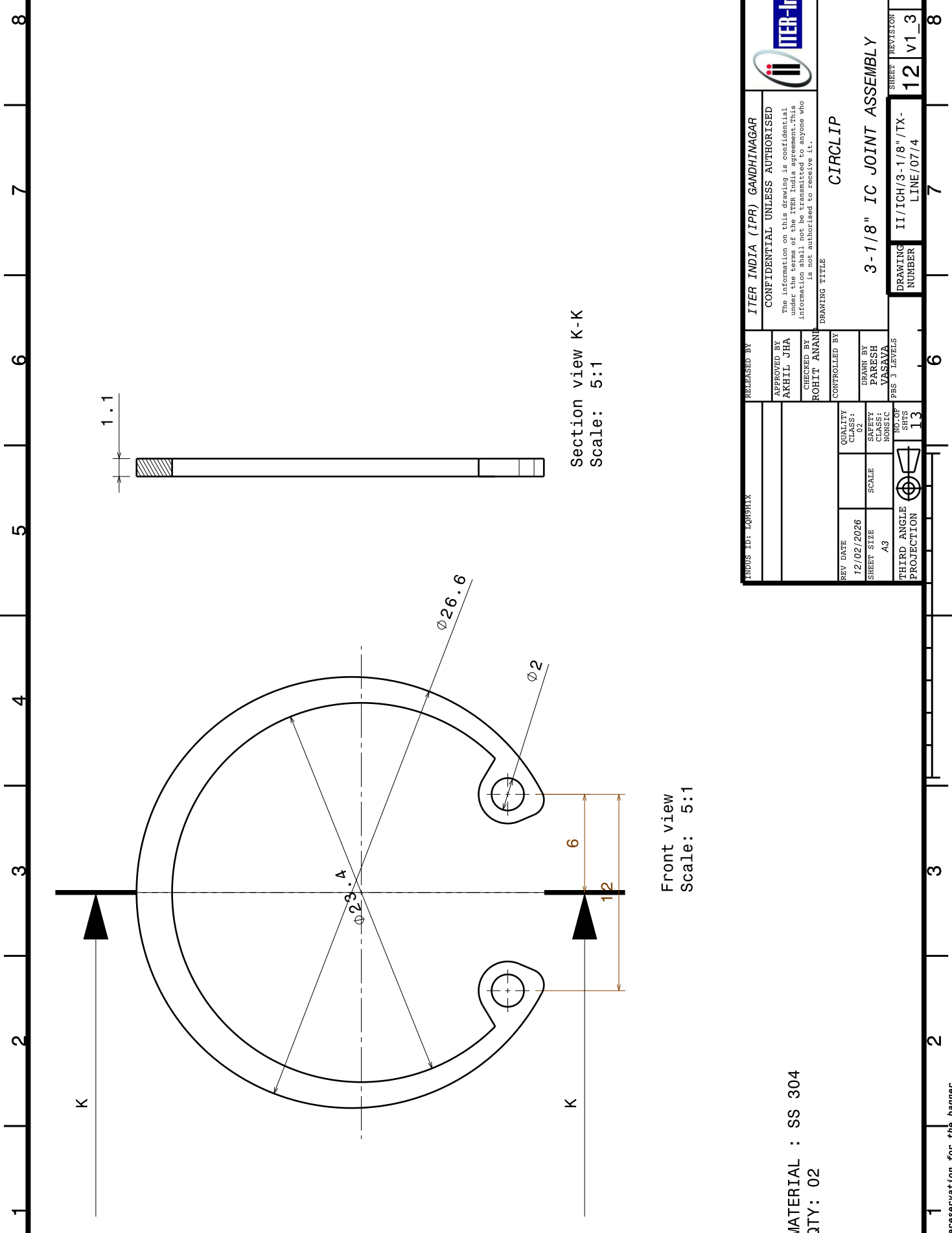
Section view D-D
Scale: 5:2


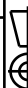
MATERIAL : IS/ISO CuZn40
QTY: 01

NOTE: FULL BODY SILVER PLATING (Cu:5 MICRON + Ag:20 MICRON)

- NOTE:
- 1.ALL THREADS INSERT TO BE USED
 - 2.ALL SHARP EDGES TO BE REMOVED AND REPLACED BY CHAMFER OF 1x45 DEG
 - 3.FLATNESS VALUES ARE NOT TO EXCEED 3 MM/METER ON ANY UNSPECIFIED SURFACE
 - 4.ROUGHNESS OF ALL UNSPECIFIED SURFACES DO NOT EXCEED Ra 8µm
 - 5.ALL UNSPECIFIED TOLERANCE TO BE CONSIDERED AS PER ISO 2768-1:1989

INDUS ID: LON991X		RELEASED BY ITER INDIA (IPR) GANDHINAGAR		ITER-India	
		APPROVED BY AKHIL JHA		CONFIDENTIAL UNLESS AUTHORISED The information on this drawing is confidential under the terms of the ITER India agreement. This information shall not be transmitted to anyone who is not authorised to receive it.	
		CHECKED BY ROHIT ANAND		DRAWING TITLE IC JOINT FEMALE	
REV DATE 12/02/2026		QUALITY CLASS: Q2		3-1/8" IC JOINT ASSEMBLY	
SHEET SIZE A3		SCALE		DRAWN BY PARSH VASAVA	
THIRD ANGLE PROJECTION		NO. OF SHTS 13		DRAWING NUMBER II/ICH/3-1/8"/TX-LINE/07/3	
		PBS 3 LEVELS		SHEET REVISION 11 v1_3	

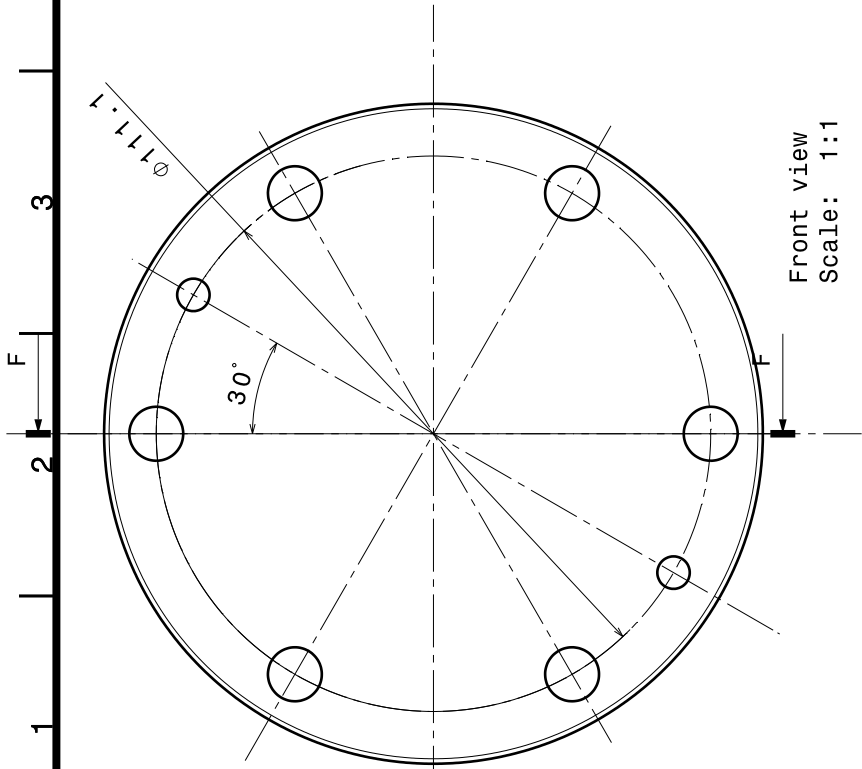


INDUS ID: LQ991X		RELEASED BY		ITER INDIA (IPR) GANDHINAGAR		 ITER-India	
		APPROVED BY		CONFIDENTIAL UNLESS AUTHORISED			
		AKHIL JHA		The information on this drawing is confidential under the terms of the ITER India agreement. This information shall not be transmitted to anyone who is not authorised to receive it.			
		CHECKED BY		DRAWING TITLE			
		ROHIT ANANT		CIRCLIP			
		CONTROLLED BY		3-1/8" IC JOINT ASSEMBLY			
		DRAWN BY		DRAWING NUMBER			
		PARESH VASAVA		II/ICH/3-1/8"/TX-LINE/07/4			
		PES 3 LEVELS		SHEET REVISION			
		NO. OF SHEETS		12 v1_3			
THIRD ANGLE PROJECTION							
REV DATE		QUANTITY CLASS:					
12/02/2026		02					
SHEET SIZE		SCALE					
A3		NONSC					

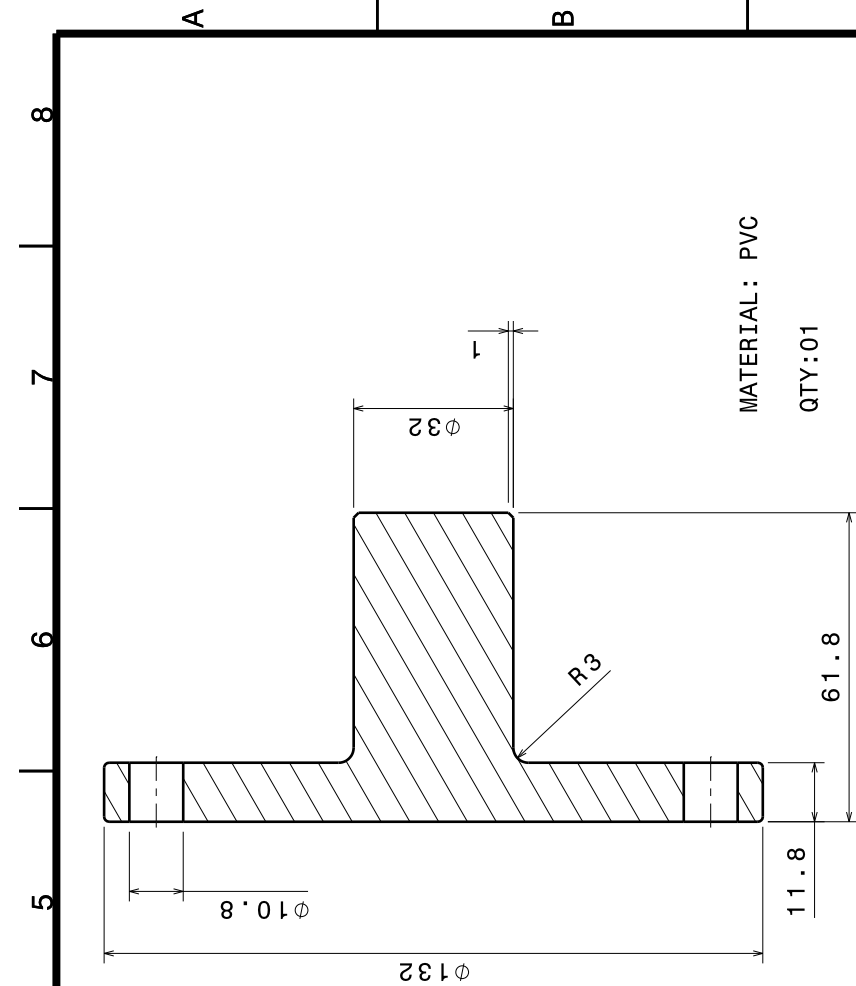
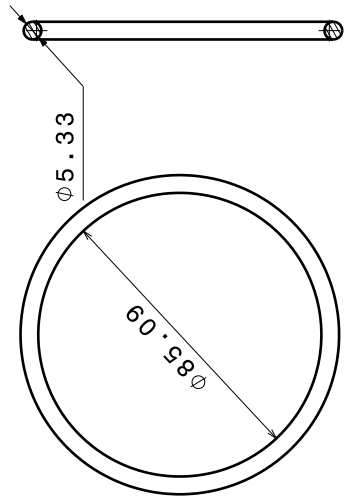
MATERIAL : SS 304
QTY: 02

Front view
Scale: 5:1



Section view K-K
Scale: 5:1



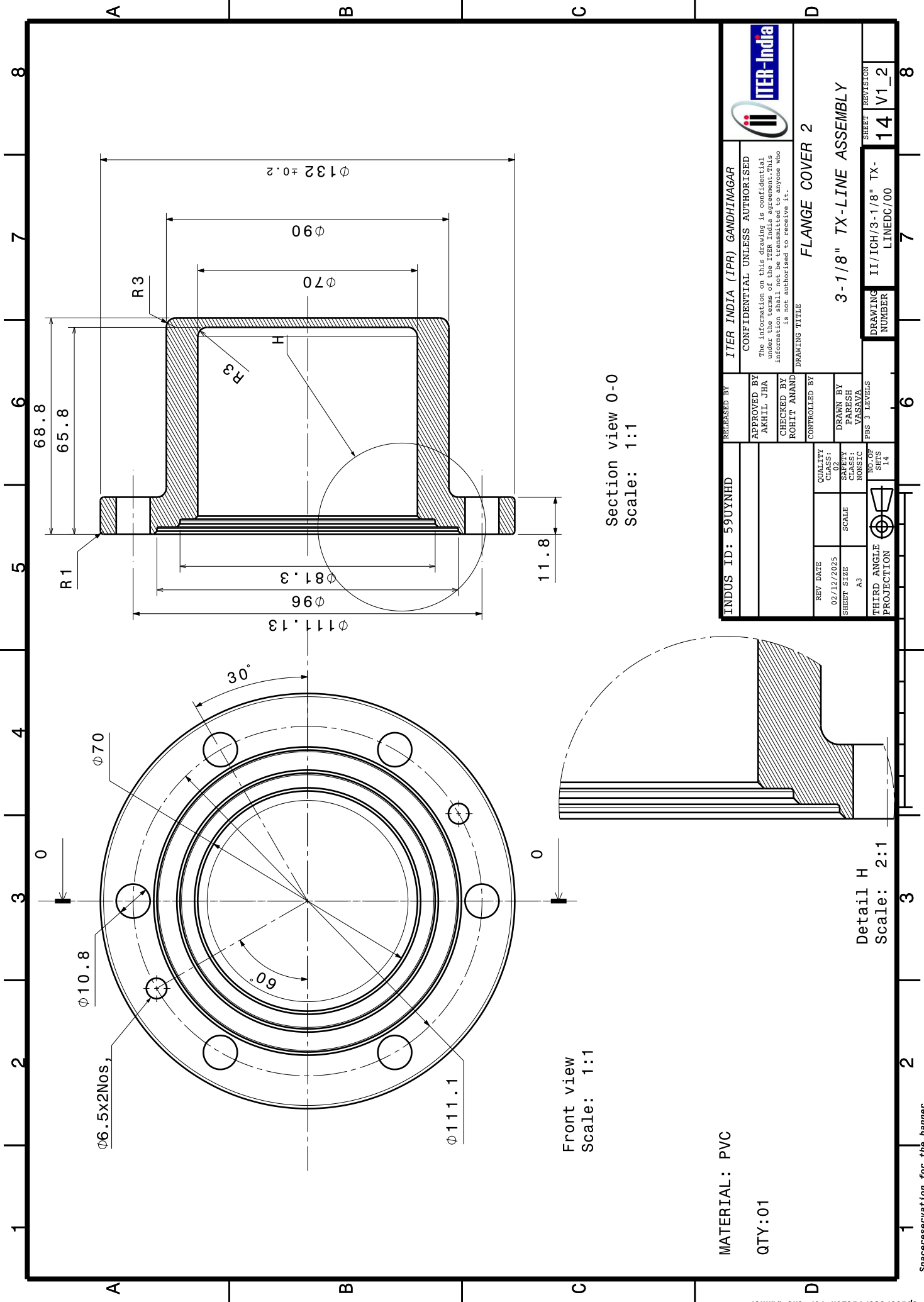
PART: O-RING MATERIAL: RUBBER SILICON
QTY: 02



MATERIAL: PVC
QTY:01

DRW DOC ID		RELEASED BY		ITER INDIA (IPR) GANDHINAGAR		 ITER-India	
LINKED EVS PT ID		APPROVED BY		CONFIDENTIAL UNLESS AUTHORISED			
PBS TITLE		AKHIL JHA				The information on this drawing is confidential under the terms of the ITER India agreement. This information shall not be transmitted to anyone who is not authorised to receive it.	
		CHECKED BY		DRAWING TITLE			
		ROHIT ANAND		FLANGE COVER - 3 & O-RING			
		CONTROLLED BY		3-1/8" TX-LINE ASSEMBLY			
REV DATE		PT MATURITY		DRAWN BY		DRAWING NUMBER	
15/09/2025		CLASS:		PARESH VASAVA			
SHEET SIZE		SCALE		PBS 3 LEVELS			
A3		NO. OF SHTS		DRAFTING II/ICH&CD/3-1/8" TX-			
THIRD ANGLE PROJECTION				LINE/00		13	
				SHEET REVISION OR STATUS			

Front view[2]



MATERIAL: PVC

QTY:01

Front view
Scale: 1:1

Section view 0-0
Scale: 1:1

Detail H
Scale: 2:1

INDUS ID: 59UYNHD		RELEASED BY	ITER INDIA (IPR) GANDHINAGAR
		APPROVED BY	CONFIDENTIAL UNLESS AUTHORISED
		The information on this drawing is confidential under the terms of the ITER India agreement. This information shall not be transmitted to anyone who is not authorised to receive it.	
		CHECKED BY	ROHIT ANAND
		CONTROLLED BY	
		DRAWN BY	PARESH VASAVA
		PBS 3 LEVELS	
REV DATE	02/12/2025	QUALITY CLASS:	
SHEET SIZE	A3	SCALE	
		CLASS	NONISC
		NO. OF SHTS	14
		THIRD ANGLE PROJECTION	

DRAWING NUMBER		ITER-India	
DRAFTING NUMBER		FLANGE COVER 2	
DRAWING NUMBER		3-1/8" TX-LINE ASSEMBLY	
DRAWING NUMBER		II/ICH/3-1/8" TX-LINEDC/00	
DRAWING NUMBER		14 V1_2	
DRAWING NUMBER		14 V1_2	